

MDV

Air Conditioning Systems



Up to 21 SEER

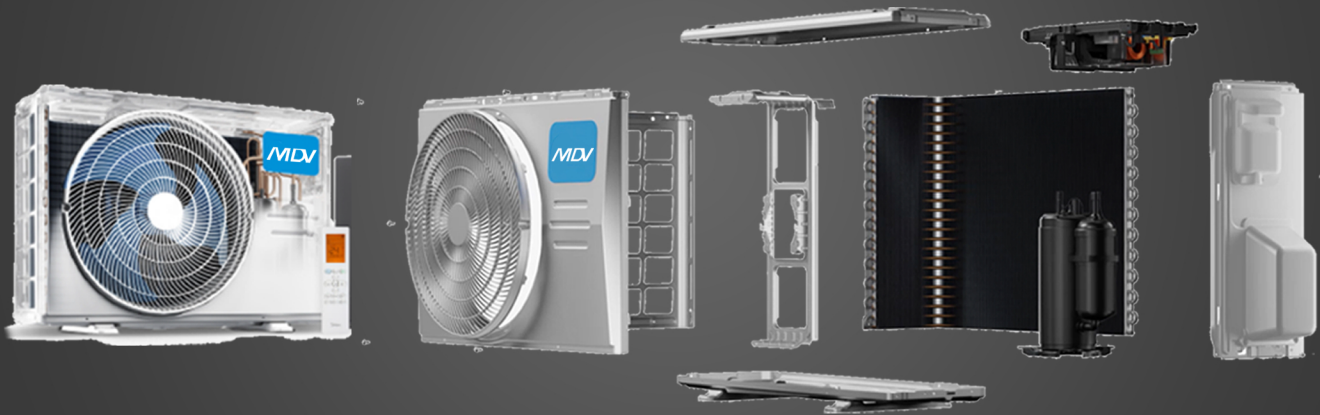
Quality and efficiency
displayed in modern elegance

Revolutionizing technology with more durability &
a system of resistance to climate & environment

Corrosion protection

Anti-sulphuration resistance

Black Fin



- Anti-corrosive Coated Pipe (OUTDOOR UNIT)
- Anti-corrosive Coated Pipe (INDOOR UNIT)
- Anti-corrosive Shield
- Anti-corrosive Motor Bracket
- SUS410 stainless steel screws



MODELS:
MDV-MSAG11B-12CRFN1-BT0WXTBM | MDV-MSAG11B-12CRFN1-MT0WXTBM | MDV-MSAG11C-18CRFN1-MT0WXTBM
MDV-MSAG11D-24CRFN1-MT0WXTBM | MDV-MSAGF-36HRFNX-MR0WXTBM
Requires professional installation - 110v & 220v Applications - Up to 21 SEER
Consult your air conditioning professional for details.



Air Conditioning Systems

Product Specifications

		Indoor Outdoor	MDV-MSAG118-12CRFN1-BTOWXTBM MDV-MOX131-12CFN1-BTOWXT	MDV-MSAG118-12CRFN1-MTOWXTBM MDV-MOX131-12CFN1-MTOWXT	MDV-MSAG11C-18CRFN1-MTOWXTBM MDV-MOX230-18CFN1-MTOWXT	MDV-MSAG11D-24CRFN1-MTOWXTBM MDV-MOX330-24CFN1-MTOWXT	MDV-MSAGF-36HRFNX-MR0WXTBM MDV-MOD31-36HFN1-MP0WXT
Power Supply		Ph-V-Hz	115V,1Ph,50/60Hz	208-230V,1Ph,50/60Hz	208-230V,1Ph,50/60Hz	208-230V,1Ph,50/60Hz	208/230V,1Ph,50/60Hz
	Capacity (Range)	Btu/h	11500(3300~12500)	11500(3030~12500)	17500(6050~18000)	22000(7700~24000)	36000(8300~37500)
Cooling	Input	W	965	960	1570	2150	3790
	Rated Current	A	8.5	4.2	6.8	9.3	16.8
	EER	Btu/w	11.9	11.98	11.26	10.2	2.78
	SEER	Btu/w	21	21	21	20	20
Minimum Circuit Ampacity		A	18	11	16	16	36000
Heating	Input	W	/	/	/	/	3790
	Current	A	/	/	/	/	16.8
	COP	W/W	/	/	/	/	2.78
Max. Fuse		A	30	15	20	20	21
Compressor	Type		ROTARY	ROTARY	ROTARY	ROTARY	ROTARY
	Capacity	W	2035/3255	2035/3255	4315	4315	8095
	Input	W	325/826	325/826	1090	1090	2200
	Rated Current(RLA)	A	13.3	5	11	12	10
	Refrigerant Oil / Oil Charge	ml	ESTER OIL VG74 310	ESTER OIL VG74 310	ESTER OIL VG74 440	ESTER OIL VG74 440	VG74/670
Indoor Fan Motor	Input	W	35.0	35	36.0	58.0	58.0
	RLA	A	0.3	0.4	0.2	/	0.28A
	Speed(Hi/Mi/Lo)	r/min	1200/1040/960	1200/1040/960	1200/650	1100/650	1200/960/600
Indoor Air Flow (Hi/Mi/Lo)		m ³ /h	566/430/360	550/395/330	800/600/520	1000/800/680	1110/760/560
Indoor Noise Level (Hi/Mi/Lo)		CFM	332.94/252.94/211.76	323.53/232.35/194.12	470.59/352.94/305.88	588.24/470.59/400.00	653.28/447.29/329.58
Indoor Unit	Dimension(W*D*H)	dB(A)	40.5/35.5/33	40/35.5/30.5	46/38.5/31.5	47.5/39.5/36	54/45/40
		mm	802x200x295	802x200x295	971x228x321	1082x234x337	1259x283x362
	Packing (W*D*H)	inch	31.57x7.87x11.61	31.57x7.87x11.61	38.23x8.98x12.64	42.60x9.21x13.27	49.56x11.14x14.25
		mm	875x285x380	875x285x380	1045x305x405	1155x415x315	1340x450x385
	Net/Gross Weight	Kg	34.45x11.22x14.96	34.45x11.22x14.96	41.14x12.01x15.94	45.47x16.34x12.40	52.75x17.71x15.15
Outdoor Fan Motor	RLA	lbs.	8.7/11.1	8.6/11	11.2/14.4	13.6/17.1	19.4/25.2
	Speed	A	19.18/24.47	18.96/24.25	24.69/31.75	29.98/37.70	42.76x55.55
Outdoor Air Flow		r/min	0.6	0.4	0.5	0.6	1.21A
Outdoor Noise Level		m ³ /h	850/600	850/600	810/700/600	810/700/550	1150/1050/900/850
		CFM	1800	1800	2100	2300	3800
Outdoor Unit	Dimension(W*D*H)	CFM	1058.82	1058.82	1235.29	1352.94	2236.46
		dB(A)	54	54.5	55.5	56.5	65
	Packing (W*D*H)	mm	720x270x495	720x270x495	765x303x555	805x330x554	946x410x810
		inch	28.35x10.63x19.49	28.35x10.63x19.49	30.12x11.93x21.85	31.69x12.99x21.81	37.24x16.14x31.88
	Net/Gross Weight	Kg	835x300x540	835x300x540	887x337x610	915x370x615	1090x500x885
Refrigerant Type	oz	32.87x11.81x21.26	32.87x11.81x21.26	34.92x13.27x24.02	36.02x14.57x24.21	42.91x19.68x34.84	
Design Pressure	PSIG	23/24.7	22/23.8	27.9/30.3	30.5/33.1	68.1/72.1	
Refrigerant Piping	Liquid Side/ Gas Side	mm	50.71/54.45	48.50/52.47	61.51/66.80	67.24/72.97	150.13/158.95
	Max. Refrigerant Pipe Length	inch	R410A/0.66	R410A/0.66	R410A/0.9	R410A/37.74	R410A/4229.34
		ft	550/340	550/340	550/340	550/340	4.2/1.5
	Max. Difference in Level	m	6.35mm/12.7mm	6.35mm/12.7mm	6.35mm/12.7mm	9.52mm/15.9mm	9.52mm/15.9mm
Connection Wiring		inch	1/4in - 1/2in	1/4in - 1/2in	1/4in - 1/2in	3/8in - 5/8in	3/8in / 5/8in
	Control Type	ft	25	25	30	30	65
		ft	82.02	82.02	98.42	98.42	213.25
		ft	10	10	20	20	30
		ft	32.81	32.81	65.62	65.62	98.42
			16AWG*4 Stranded, unshielded				
			Wireless Remote Control				



Optimized Design

Alpha Energy processor with Mission X algorithm. Keeps the room cool with low energy



Low Noise

20db sound to ensure that everyone in the family sleeps in harmony and without unnecessary



E-Max Mode

Cooling capacity for 8 hours with only 1kWh of energy consumption.



Smart Connections

WiFi connectivity option via USB Smart Kit, Amazon Echo and Google Home.



3D Airflow

Movement in multiple directions for airflow throughout the room.

X TREME Dura

