

VRF Indoor Unit

MIH450T1HN18 – High Static Pressure Duct

1-phase, 220-240V, 50/60Hz



Submittal Data

Job name: _____

Location: _____

Tag: _____

Date: _____



MIH450T1HN18 Features:

- ♦ High efficiency DC fan motor
- ♦ 20-step static pressure control (requires latest generation wired controllers)
- ♦ External static pressure can be up to 400Pa
- ♦ 7-speed fan control
- ♦ Built-in EXV
- ♦ A double-skin drainage pan provides double protection for ceilings

Specifications:

Model			MIH450T1HN18
Cooling ¹	Capacity	kW	45.0
		kBtu/h	153.6
	Power input	W	1850
Heating ²	Capacity	kW	56.0
		kBtu/h	191.1
	Power input	W	1850
Air flow rate ³		m ³ /h	7500/7000/6500/6000/5500/5000/4500
External static pressure		Pa	300 (0-400)
Sound pressure level ⁴		dB(A)	58/56/54/52/50/49/48
Net dimensions ⁵ (W×H×D)		mm	1850×580×900
Packed dimensions (W×H×D)		mm	2080×730×1060
Net/Gross weight		kg	166/204
Pipe connections	Liquid/Gas pipe	mm	Φ15.9/Φ28.6
	Drain pipe	mm	ODΦ32
Minimum Circuit Amps (MCA)		A	12.98
Recommended Fuse Size (MFA)		A	30

Notes:

1. Indoor temperature 27°CDB, 19°CWB; outdoor temperature 35°CDB; equivalent refrigerant piping length 7.5m with zero level difference.
2. Indoor temperature 20°CDB; outdoor temperature 7°CDB, 6°CWB; equivalent refrigerant piping length 7.5m with zero level difference.
3. Air flow rate are from the highest speed to the lowest speed, total 7 rates for each model.
4. Sound pressure level is from highest level to lowest level, total 7 levels for each model. Sound pressure level is measured 1.4m below the unit in a semi-anechoic chamber.
5. Unit body dimensions given are the largest external dimensions of the unit, including hanger attachments.

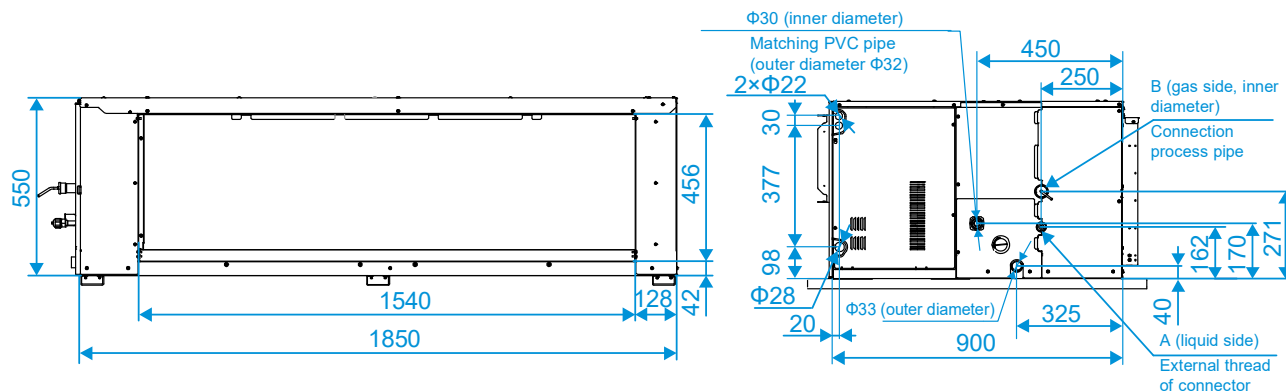
Product specifications change from time to time as product improvements and developments are released and may vary from those in this document.

Dimensional Drawing:

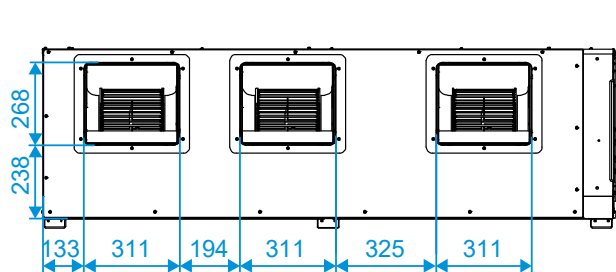
Unit (mm)

Capacity (kW)	A	B
$33.5 \leq kW \leq 40.0$	3/4-16 UNF	$\Phi 25.4$
$40.0 < kW \leq 56.0$	7/8-14 UNF	$\Phi 28.6$

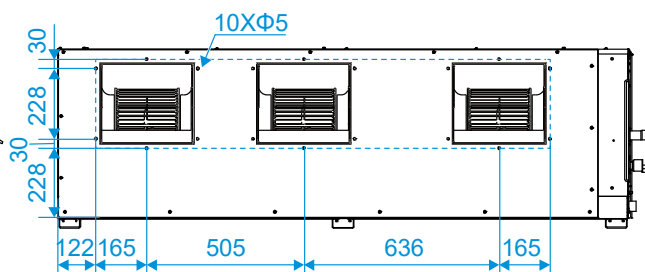
Appearance and dimensions of the air inlets, piping, drain pipes, power cable hole and communication wire hole:



Dimensions of the air outlets:



Dimensions of the air duct installation hole after the air outlet flange is removed:



Dimensions of lugs and the screw hole of air outlet/inlet flange:

