

VRF Indoor Unit

MIH140T2HN18 – Medium Static Pressure Duct

1-phase, 220-240V, 50/60Hz



Submittal Data

Job name: _____

Location: _____

Tag: _____

Date: _____



MIH140T2HN18 Features:

- ♦ High efficiency DC fan motor
- ♦ 10-step static pressure control (requires latest generation wired controllers)
- ♦ 7-speed fan control
- ♦ Fresh air intake
- ♦ High-lift drain pump with 1200mm pump head
- ♦ Built-in EXV
- ♦ Flexible installation for the air inlet may be positioned either on the underside or the rear of the unit

Specifications:

Model			MIH140T2HN18
Cooling ¹	Capacity	kW	14
		kBtu/h	47.8
	Power input	W	172
Heating ²	Capacity	kW	16
		kBtu/h	54.6
	Power input	W	172
Air flow rate ³		m ³ /h	2105/1971/1837/1703/1568/1434/1300
External static pressure		Pa	50 (10-160)
Sound pressure level ⁴		dB(A)	40/38/36/34/32/30/29
Net dimensions ⁵ (W×H×D)		mm	1400×245×750
Packed dimensions (W×H×D)		mm	1565×305×885
Net/Gross weight		kg	39/44
Pipe connections	Liquid/Gas pipe	mm	Φ9.52/Φ15.9
	Drain pipe	mm	ODΦ25
Minimum Circuit Amps (MCA)		A	2.31
Recommended Fuse Size (MFA)		A	15

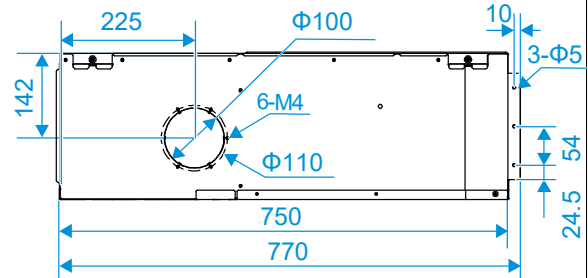
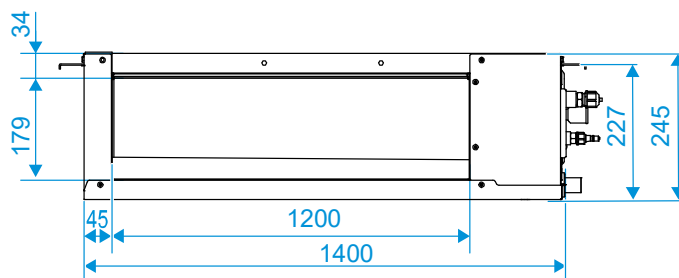
Notes:

1. Indoor temperature 27°CDB, 19°CWB; outdoor temperature 35°CDB; equivalent refrigerant piping length 7.5m with zero level difference.
2. Indoor temperature 20°CDB; outdoor temperature 7°CDB, 6°CWB; equivalent refrigerant piping length 7.5m with zero level difference.
3. Air flow rate are from the highest speed to the lowest speed, total 7 rates for each model.
4. Sound pressure level is from highest level to lowest level, total 7 levels for each model. Sound pressure level is measured 1.4m below the unit in a semi-anechoic chamber.
5. Unit body dimensions given are the largest external dimensions of the unit, including hanger attachments.

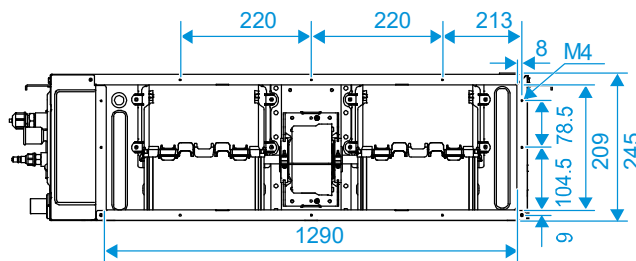
Dimensional Drawing:

Unit (mm)

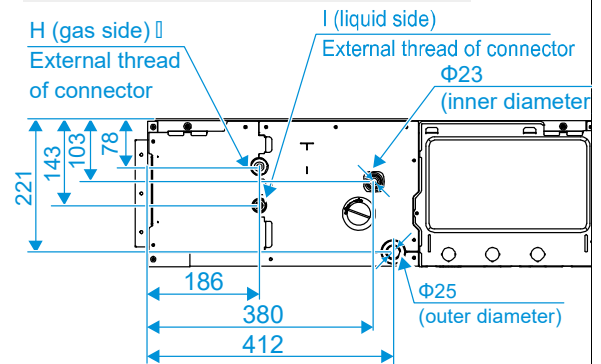
External dimension, air outlet size, and size of fresh air outlet:



Size of return air inlet (back return air mode):



Dimension of pipe and water pipe:



Size of return air inlet (bottom return air mode), and the distance between the lugs:

