

## VRF Indoor Unit

### MIH28T2HN18 – Medium Static Pressure Duct

1-phase, 220-240V, 50/60Hz



## Submittal Data

Job name: \_\_\_\_\_

Location: \_\_\_\_\_

Tag: \_\_\_\_\_

Date: \_\_\_\_\_



#### MIH28T2HN18 Features:

- ♦ High efficiency DC fan motor
- ♦ 6-step static pressure control (requires latest generation wired controllers)
- ♦ 7-speed fan control
- ♦ Fresh air intake
- ♦ High-lift drain pump with 1200mm pump head
- ♦ Built-in EXV
- ♦ Flexible installation for the air inlet may be positioned either on the underside or the rear of the unit

#### Specifications:

Model			MIH28T2HN18
Cooling <sup>1</sup>	Capacity	kW	2.8
		kBtu/h	9.6
	Power input	W	40
Heating <sup>2</sup>	Capacity	kW	3.2
		kBtu/h	10.9
	Power input	W	40
Air flow rate <sup>3</sup>		m <sup>3</sup> /h	540/503/467/430/393/357/320
External static pressure		Pa	30 (10-160)
Sound pressure level <sup>4</sup>		dB(A)	26.5/26/25/24/23/22.5/22
Net dimensions <sup>5</sup> (W×H×D)		mm	600×245×750
Packed dimensions (W×H×D)		mm	765×305×885
Net/Gross weight		kg	18.5/21
Pipe connections	Liquid/Gas pipe	mm	Φ6.35/Φ12.7
	Drain pipe	mm	ODΦ25
Minimum Circuit Amps (MCA)		A	0.63
Recommended Fuse Size (MFA)		A	15

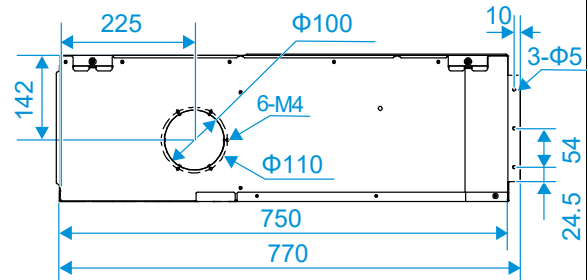
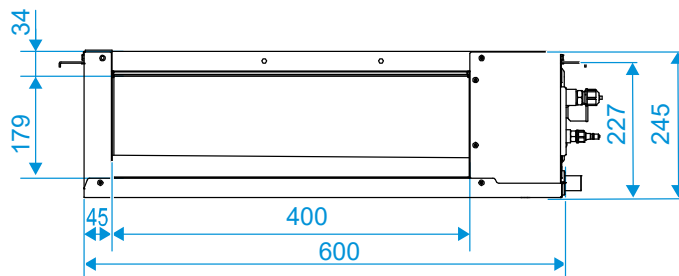
#### Notes:

1. Indoor temperature 27°CDB, 19°CWB; outdoor temperature 35°CDB; equivalent refrigerant piping length 7.5m with zero level difference.
2. Indoor temperature 20°CDB; outdoor temperature 7°CDB, 6°CWB; equivalent refrigerant piping length 7.5m with zero level difference.
3. Air flow rate are from the highest speed to the lowest speed, total 7 rates for each model.
4. Sound pressure level is from highest level to lowest level, total 7 levels for each model. Sound pressure level is measured 1.4m below the unit in a semi-anechoic chamber.
5. Unit body dimensions given are the largest external dimensions of the unit, including hanger attachments.

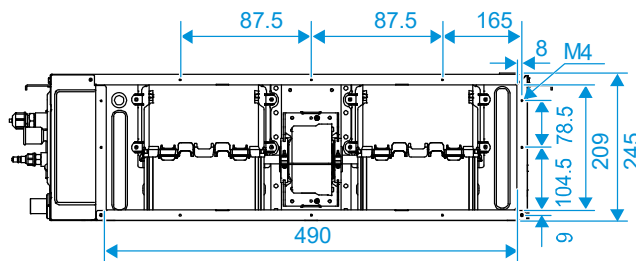
## Dimensional Drawing:

Unit (mm)

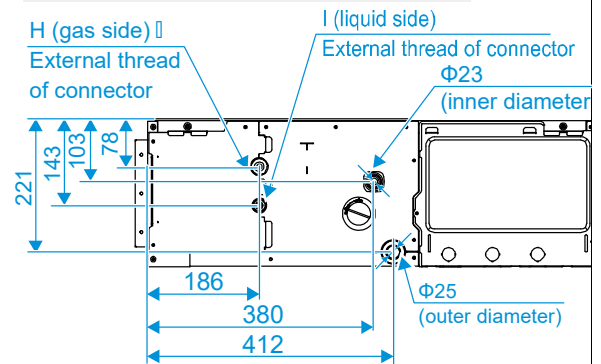
External dimension, air outlet size, and size of fresh air outlet:



Size of return air inlet (back return air mode):



Dimension of pipe and water pipe:



Size of return air inlet (bottom return air mode), and the distance between the lugs:

