

VRF Indoor Unit

MIH90T2HN18 – Medium Static Pressure Duct

1-phase, 220-240V, 50/60Hz



Submittal Data

Job name: _____

Location: _____

Tag: _____

Date: _____



MIH90T2HN18 Features:

- ♦ High efficiency DC fan motor
- ♦ 10-step static pressure control (requires latest generation wired controllers)
- ♦ 7-speed fan control
- ♦ Fresh air intake
- ♦ High-lift drain pump with 1200mm pump head
- ♦ Built-in EXV
- ♦ Flexible installation for the air inlet may be positioned either on the underside or the rear of the unit

Specifications:

Model			MIH90T2HN18
Cooling ¹	Capacity	kW	9
		kBtu/h	30.7
	Power input	W	110
Heating ²	Capacity	kW	10
		kBtu/h	34.1
	Power input	W	110
Air flow rate ³		m ³ /h	1420/1323/1225/1128/1030/933/835
External static pressure		Pa	40 (10-160)
Sound pressure level ⁴		dB(A)	37/35.5/34/32.5/31/29.5/28
Net dimensions ⁵ (W×H×D)		mm	1050×245×750
Packed dimensions (W×H×D)		mm	1215×305×885
Net/Gross weight		kg	31/35
Pipe connections	Liquid/Gas pipe	mm	Φ9.52/Φ15.9
	Drain pipe	mm	ODΦ25
Minimum Circuit Amps (MCA)		A	1.63
Recommended Fuse Size (MFA)		A	15

Notes:

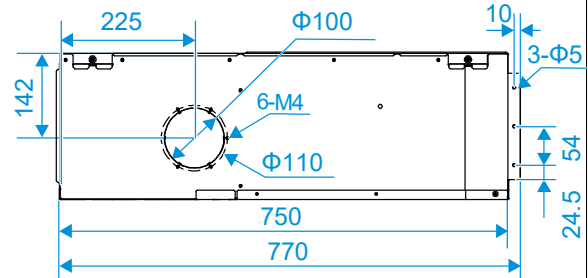
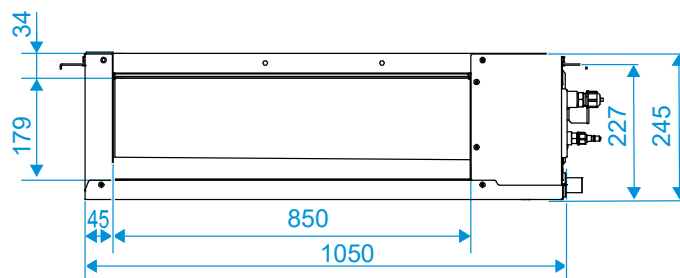
1. Indoor temperature 27°CDB, 19°CWB; outdoor temperature 35°CDB; equivalent refrigerant piping length 7.5m with zero level difference.
2. Indoor temperature 20°CDB; outdoor temperature 7°CDB, 6°CWB; equivalent refrigerant piping length 7.5m with zero level difference.
3. Air flow rate are from the highest speed to the lowest speed, total 7 rates for each model.
4. Sound pressure level is from highest level to lowest level, total 7 levels for each model. Sound pressure level is measured 1.4m below the unit in a semi-anechoic chamber.
5. Unit body dimensions given are the largest external dimensions of the unit, including hanger attachments.

Product specifications change from time to time as product improvements and developments are released and may vary from those in this document.

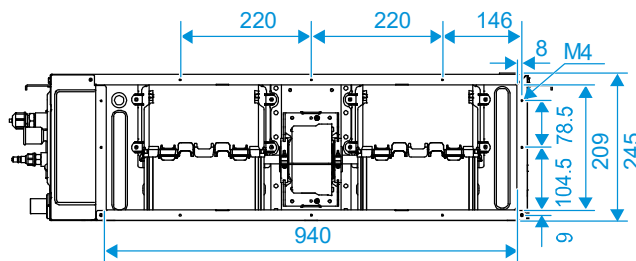
Dimensional Drawing:

Unit (mm)

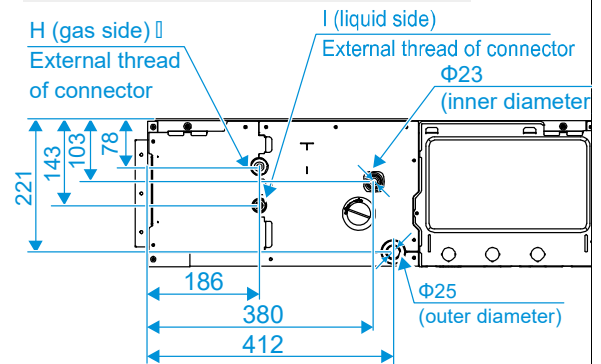
External dimension, air outlet size, and size of fresh air outlet:



Size of return air inlet (back return air mode):



Dimension of pipe and water pipe:



Size of return air inlet (bottom return air mode), and the distance between the lugs:

